



# Upper Merri Creek IWM Symposium

Pat McCafferty, Managing Director  
October 2019



# Yarra Valley Water's Purpose

OUR PURPOSE IS TO PROVIDE  
EXEMPLARY WATER AND SANITATION  
SERVICES THAT CONTRIBUTE TO THE  
HEALTH AND WELLBEING OF CURRENT  
AND FUTURE GENERATIONS.



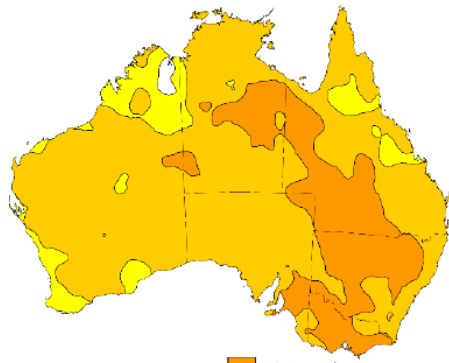
YARRA  
VALLEY  
WATER

PLANET  
PEOPLE  
PROSPERITY  
2018

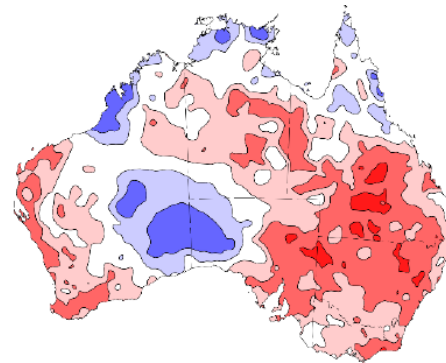
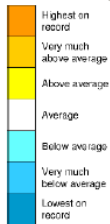


# Context

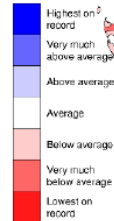
## RECURRING LOW RAINFALL RECORD HOT TEMPERATURES



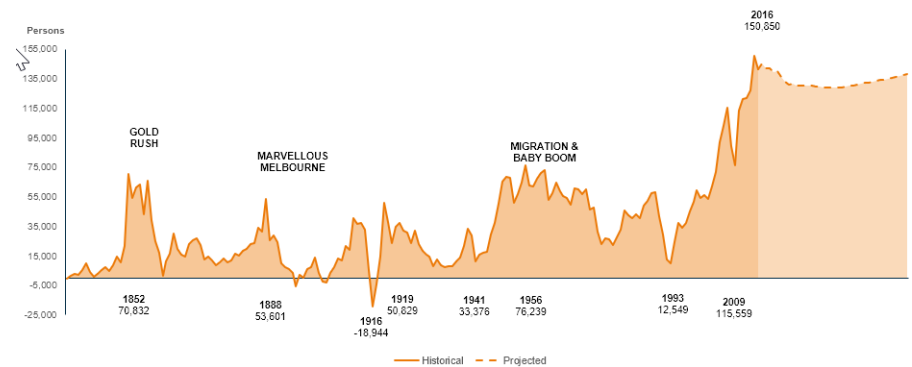
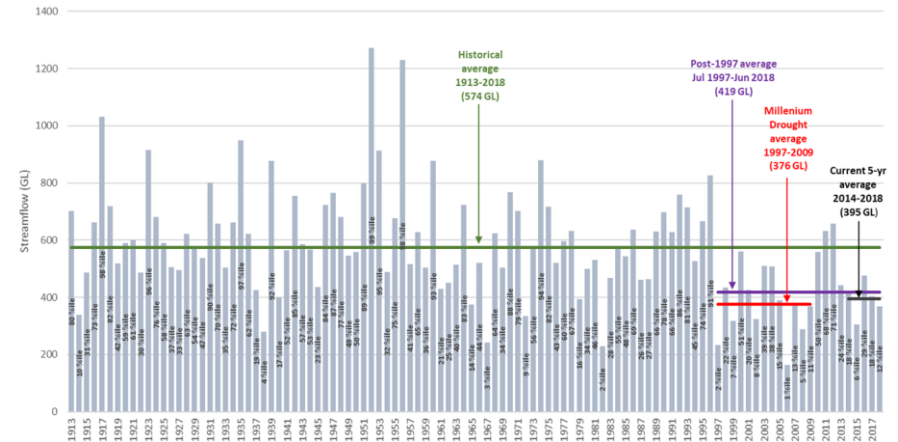
Mean temperature deciles



Mean rainfall deciles

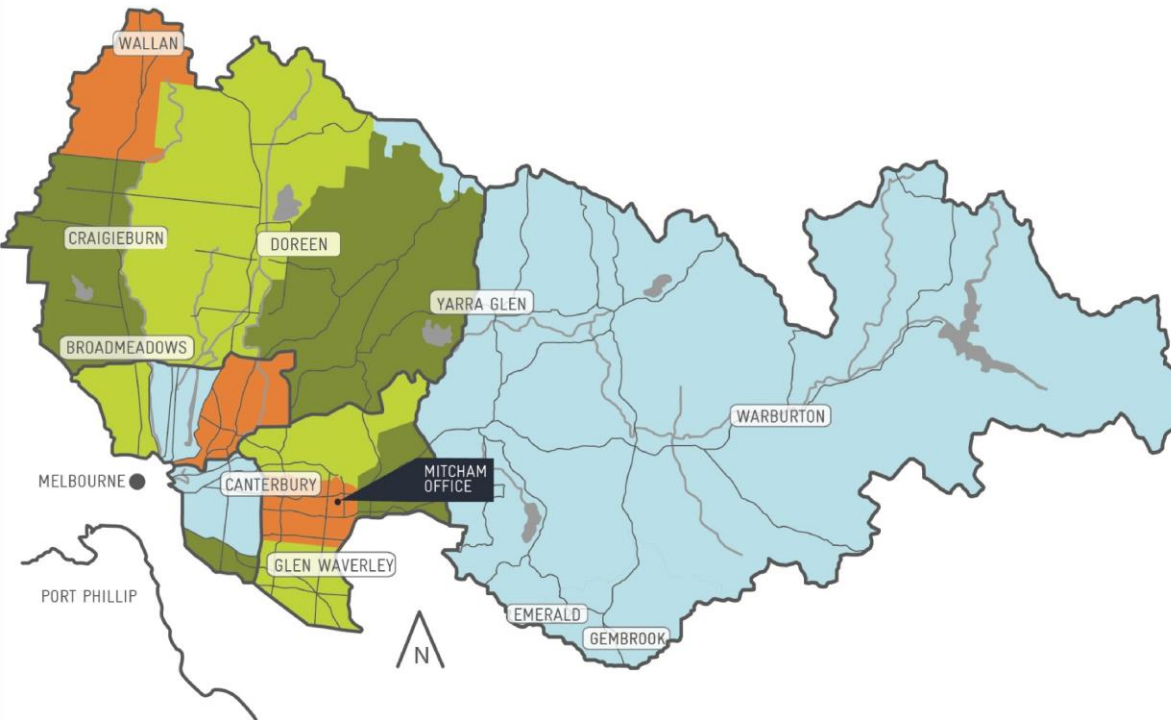


## DECLINING INFLOWS

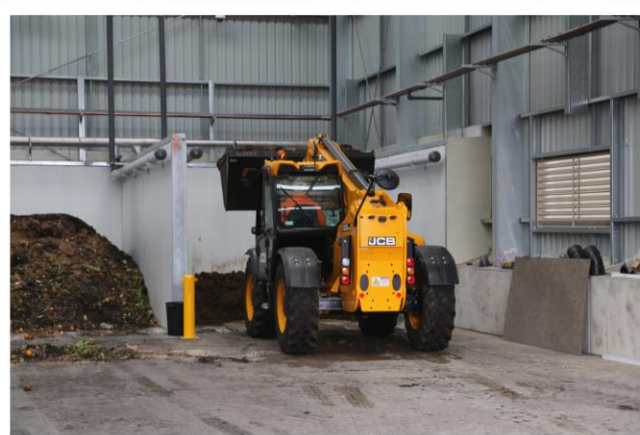




# A growing, diverse region



# Renewable Energy

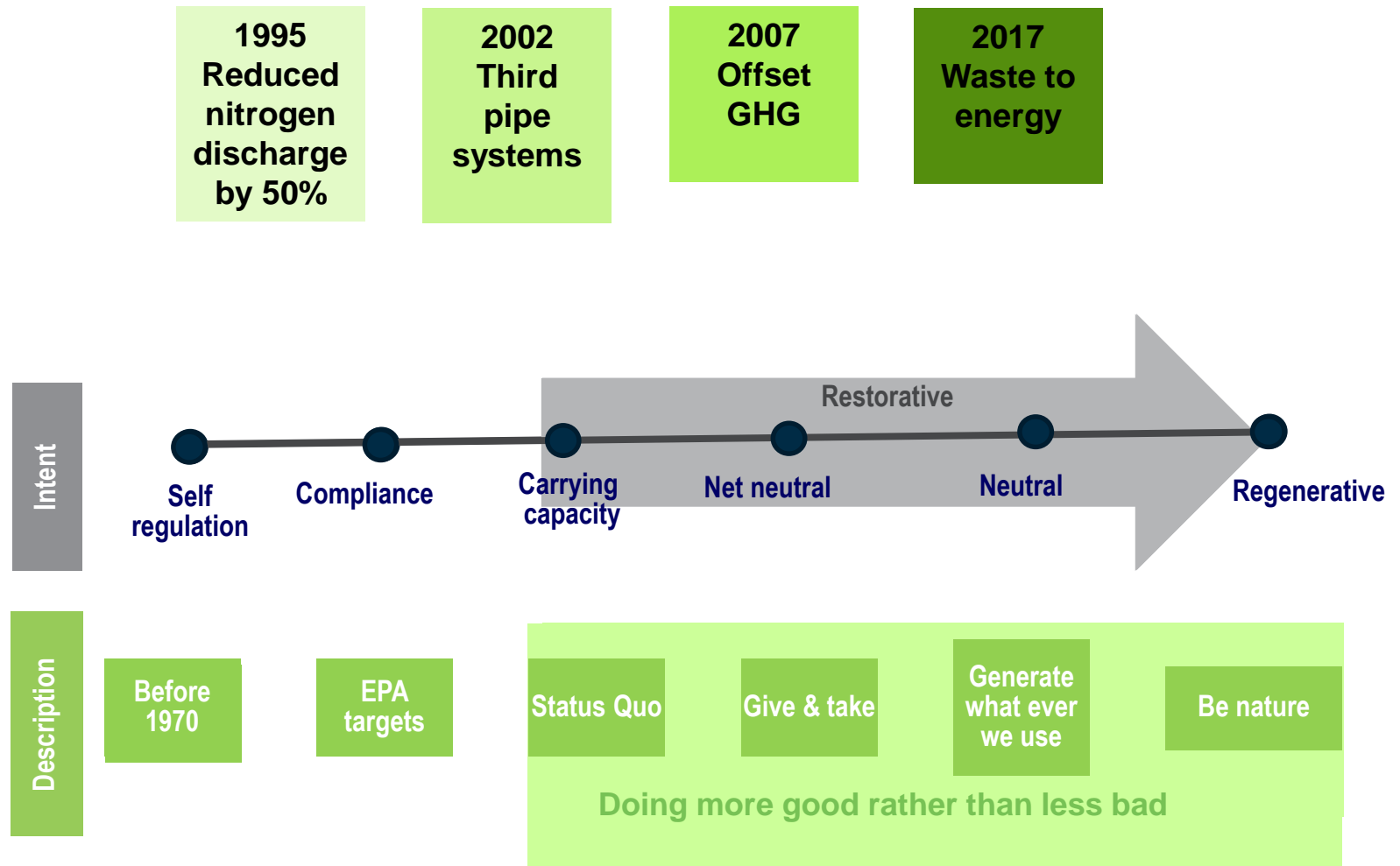




# A digital future



# The journey.....







WATER SERVICES  
ASSOCIATION OF AUSTRALIA



Blue+green=liveability

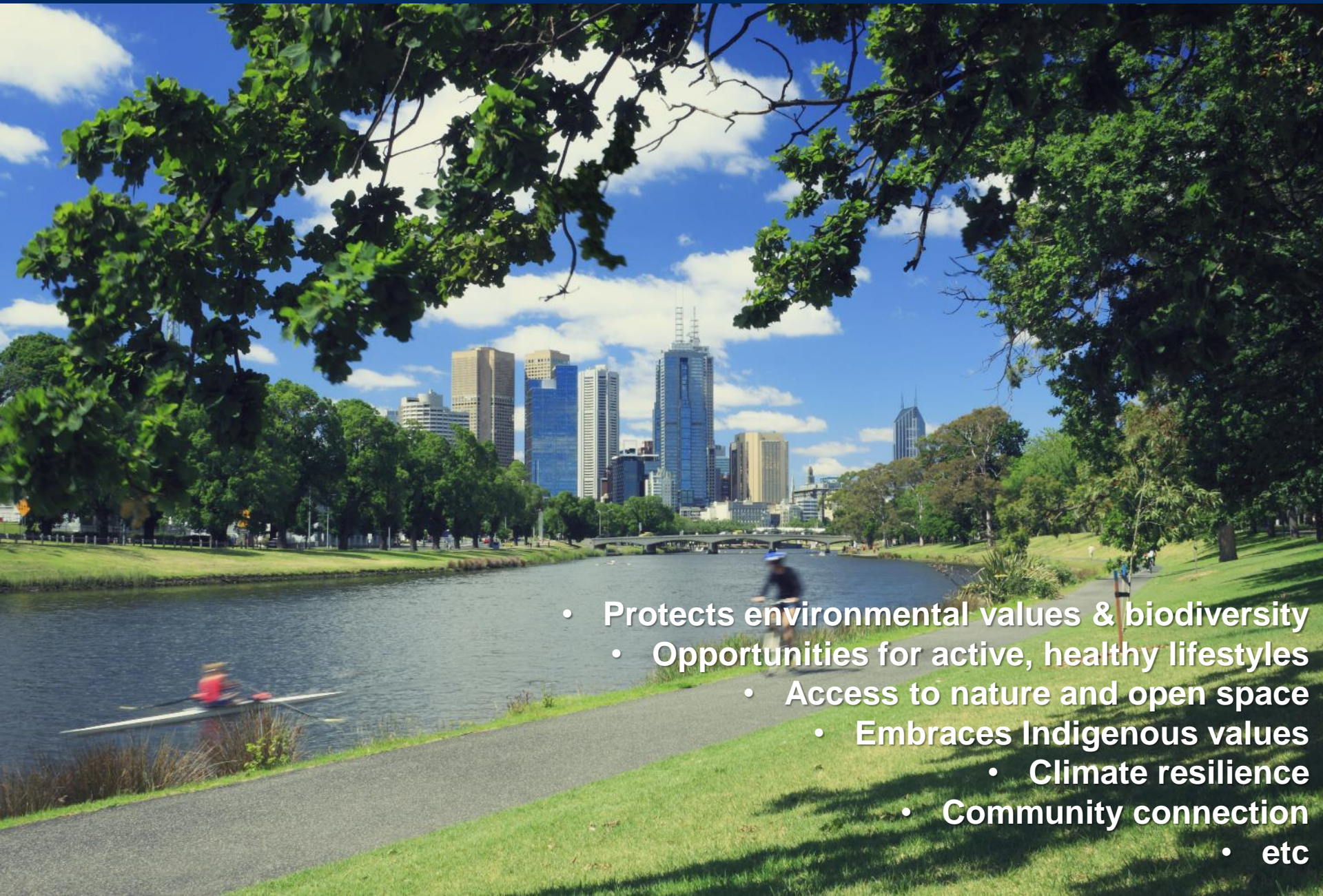
**THE VALUE OF WATER TO LIVEABLE COMMUNITIES**





Liveable, sustainable  
and productive cities  
and regions are  
critical to our  
economic wellbeing  
and quality of life

# A liveable city or region



- Protects environmental values & biodiversity
  - Opportunities for active, healthy lifestyles
  - Access to nature and open space
  - Embraces Indigenous values
  - Climate resilience
- Community connection
  - etc



# Water industry's vital contribution



## HEALTH BENEFITS FROM WATER CENTRIC LIVEABLE COMMUNITIES

A REPORT PREPARED FOR THE WATER SERVICES  
ASSOCIATION OF AUSTRALIA (WSAA)

1 MAY 2019



## Case Study: Western Parkland City (Sydney)

tree canopy  
shaded open space  
green spaces  
integrated land use and water  
cycle management

\$6.5B community value

- deferred augmentation
- reduced healthcare costs
- 2.2 degree drop in max. temps
- reduced energy consumption
- native vegetation & biodiversity
- more compact urban form



# Our vision

- Engage with our communities to understand
- Water industry recognised as key enabler
- Help communities respond to challenges
- Expand our collaboration with other sectors





# The path to liveability

- Harnessing full water cycle
- Integrating our approach to planning
- Implementing an effective framework for measuring liveability benefits
- Funding green and blue infrastructure as social infrastructure

Summary of recommendations				
	HARNESS THE WHOLE WATER CYCLE	INTEGRATED APPROACH TO PLANNING	MEASURING BENEFITS	FUNDING OF GREEN AND BLUE INFRASTRUCTURE
<b>Government leadership</b>	Initiate a new National Water Initiative focused on the liveability of our cities and regions across the urban water cycle  Ensure all water supply options are on the table	Develop governance principles and water plans that reflect the importance of water to liveability and clearly state the role of urban water utilities to contribute to liveability outcomes	Implement policies and methodologies that enable effective evaluation of liveability outcomes	Allocate funding, resources and accountability within government to liveability outcomes in the same way as other social infrastructure such as health and education
<b>Urban water industry</b>	Evaluate the cost effectiveness of all water supply options available for a particular city or region  Undertake community engagement for water supply options	Strengthen our capacity to partner and collaborate with other sectors to deliver green and blue infrastructure  Continue to engage with communities to understand their future needs	Continue to measure the financial, social and environmental value of water-enabled liveability outcomes  Continue to engage with customers to ensure we understand their preferences and willingness to pay	Identify funding arrangement opportunities that consider green and blue infrastructure as social infrastructure. For example, public-private partnerships, contributions from beneficiary stakeholders and direct government funding
<b>Collaborating partners</b> Local government Health Planning and development Energy Waste	Support the water industry in engagement with communities to ensure all water supply options are on the table	Form a coalition of key players as a united voice for enhancing liveability  Develop joint principles to clarify governance, roles and responsibilities for collaborative programs	Commit to collaborating and sharing best practice information and data	

