

A developer's
perspective

UDIA
Mesh

Aspiration

- Different types of housing
- Healthy and vibrant communities
- Opportunities for greener parks and streets
- Alternative approaches to energy, water and

Vibrant



Housing



Greenery



Active Transport



Energy Efficient

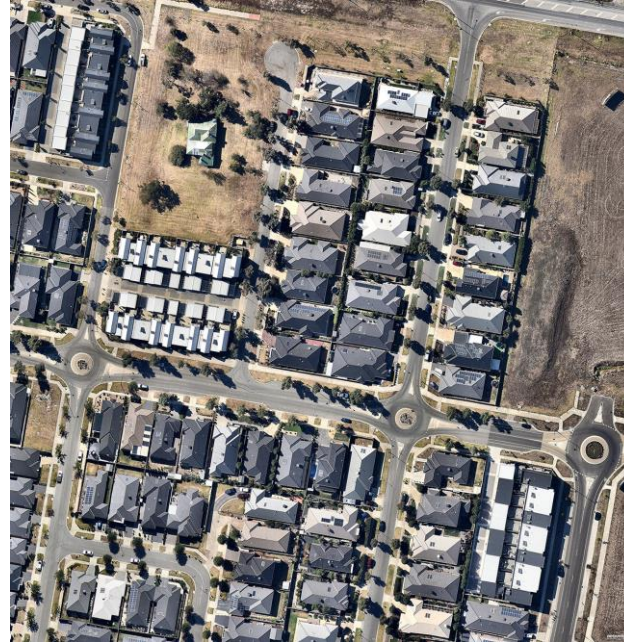


Housing + Urban Form

- CHALLENGES IN DIVERSIFYING HOUSING STOCK AND URBAN FORM TO ALIGN WITH CHANGING COMMUNITY EXPECTATIONS

Current

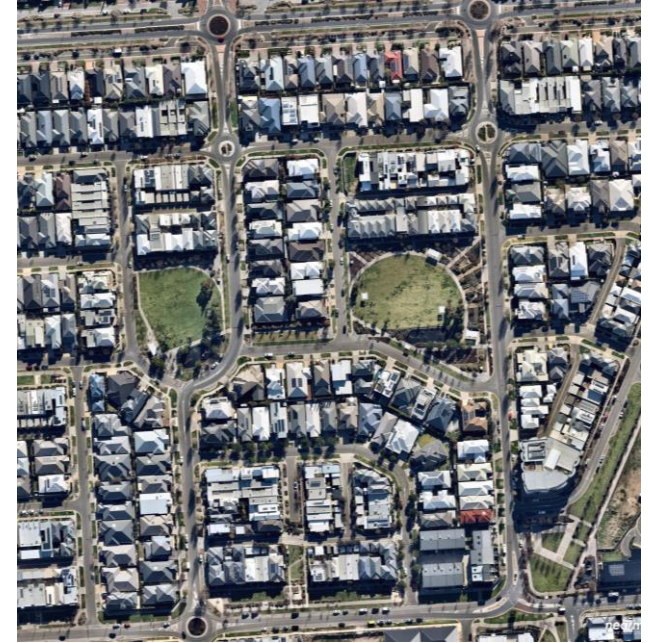
15 dwellings/ha



Alarah Blvd, Cranbourne West, Victoria

Alternative

26 dwellings/ha



Lightsview,
South Australia

Emerging Issues

- DEVELOPER EXPERIENCES
- BALANCING SOCIAL, ENVIRONMENTAL AND ECONOMIC REALITIES



Transportation

- Rail and Road Network – especially east/west movements
- Public transport delivery
- Planning for Freight Movement

Jobs & Affordability

- Dispersed network of jobs
- Lack affordability
- Building connectivity
- Systemic Issues and regulatory environment

Infrastructure

- Coordination in Infrastructure Delivery
- Drainage and Stormwater

2018-19 UDIA VICTORIA ADVOCACY AGENDA

Our Homes



- Prioritise Housing Affordability
- Modernise the Planning system
- More homes and more housing options

Our Communities



- Speed up infrastructure delivery
- Keep a lid on development costs
- Increase Victoria's Liveability

Our Economic Future



- Protect Victoria as an Investment Destination
- Future-proof population growth
- Activate the tax system